

Install Toshiba Universal Drivers 10-3-2018

The Easy way

1. How to download and extract and Locate the Toshiba Print Driver on a Microsoft Windows 10 PC.

- A. Open your web browser and go to <http://business.toshiba.com/support/>
- B. In the search field type the model of Toshiba you have then select 'Search for Model'

The screenshot shows the 'DRIVERS, MSDS, MANUALS' section of the Toshiba support website. It features a search bar under 'SEARCH BY MODEL' with a 'SEARCH FOR MODEL' button. Below the search bar is a note '* Required Fields'. To the right, under 'OR SELECT A PRODUCT', there are four buttons: 'B/W COPIER', 'COLOR COPIER', 'FAX', and 'PRINTER'.

The screenshot shows the 'E-BRIDGE CURRENT DRIVERS' section of the Toshiba support website. It contains a table with the following data:

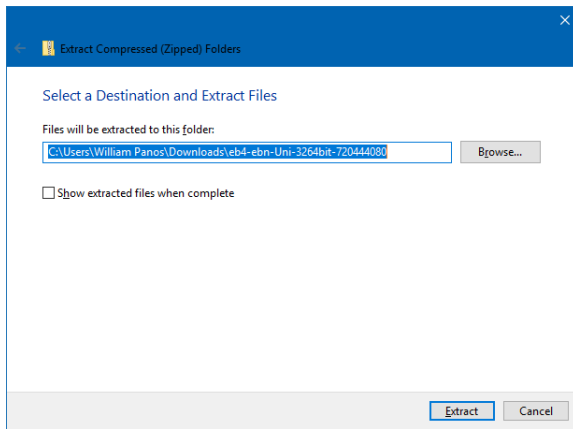
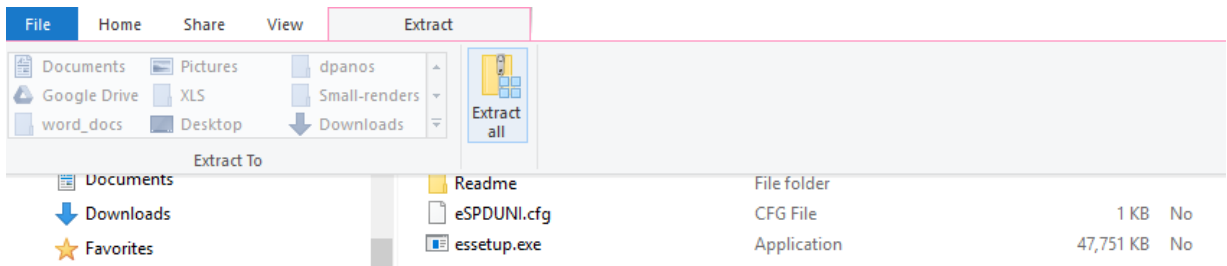
DESCRIPTION	DATE	VERSION	Download Icon	File Icon
Windows e-Bridge Universal 2 PCL/PS 32/64 Bit Driver	07/31/18	7.204.4408.0	ZIP	-
Windows e-Bridge Universal 2 PS 32/64 Bit Driver	07/31/18	7.204.4408.0	ZIP	-

2. Select the driver you want for download by clicking on the 'ZIP' link.

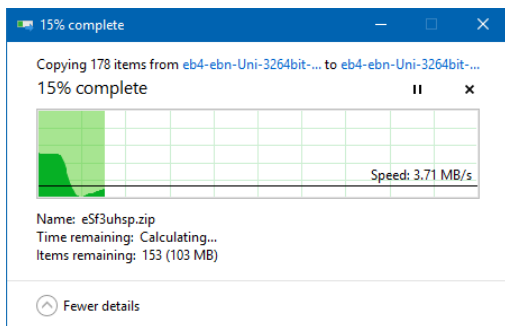
- A. We usually select the 'Windows e-Bridge Universal 2 PCL/PS 32/64 Bit Driver'. This driver is PCL first, but can be changed to Postscript if needed.
- B. You can select the Postscript driver if you use a specialized graphics programs such as Adobe InDesign or some other publishing program. 'Windows e-Bridge Universal 2 PS 32/64 Bit Driver' is the Postscript Universal Driver.

3. Start the download.

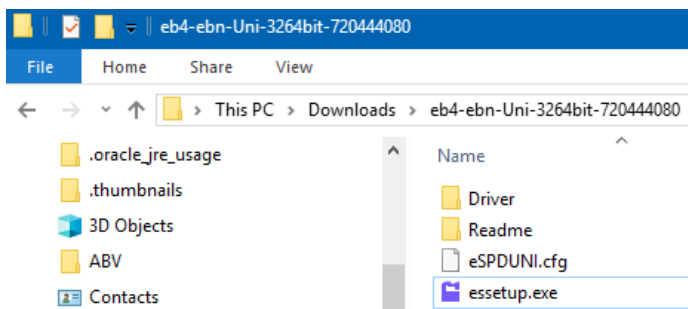
- A. Save the download wherever you want, however if you use the default location this will be in the 'This PC', downloads directory. 84.7mb size.
- B. Extract the Zip file. Select 'Extract All'.



- C. By default, 'Show extracted files when complete' will be checked. Check the box if it is unchecked. Now select the button 'Extract' and extract the files.

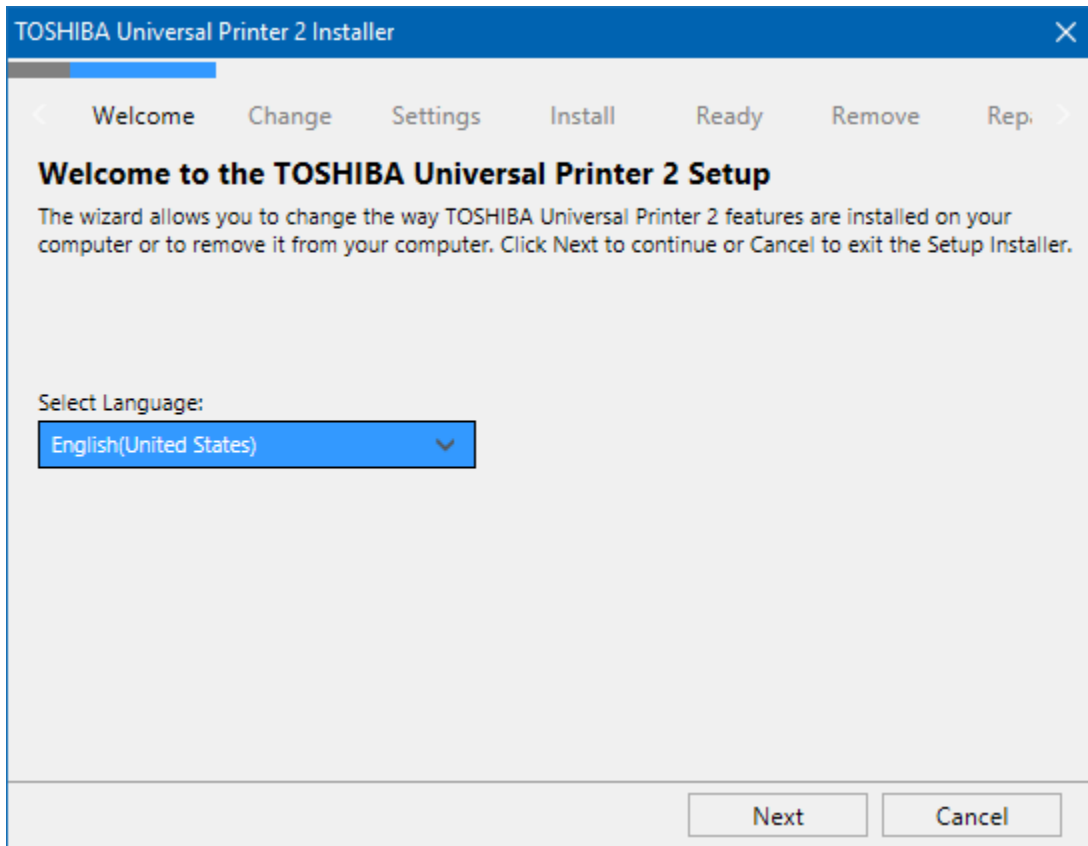


- D. The window that you extracted the ZIP download file should open automatically.



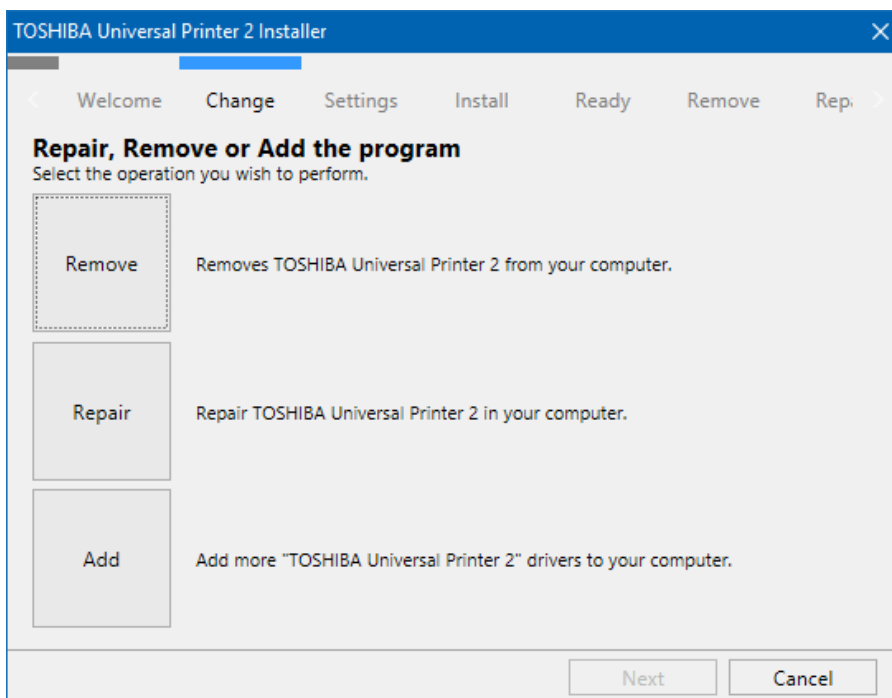
4. Select the 'essetup.exe' file and run it.

A. Security message will appear, select **Yes** to the message.

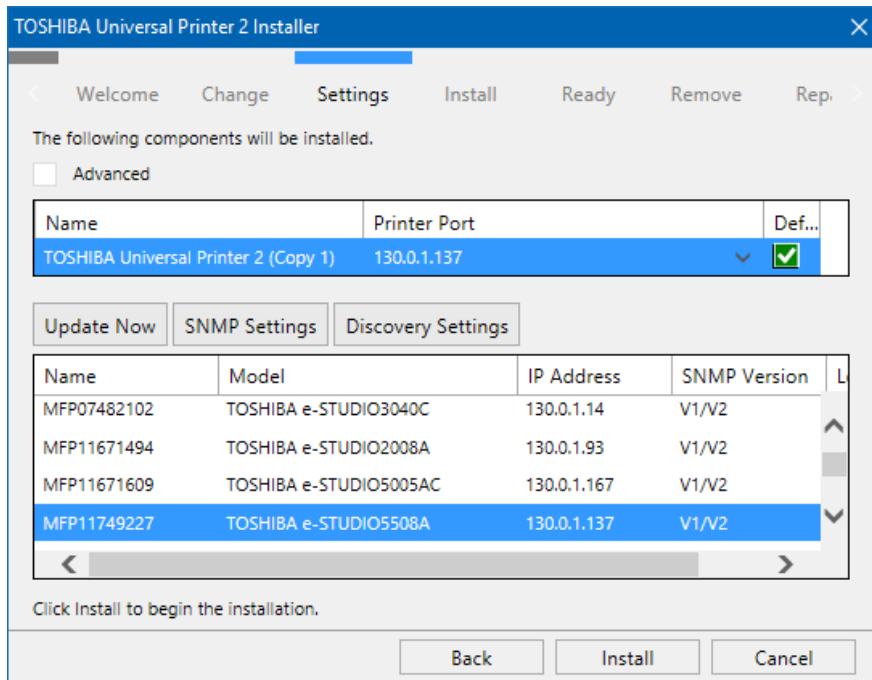


B. Select 'Next'.

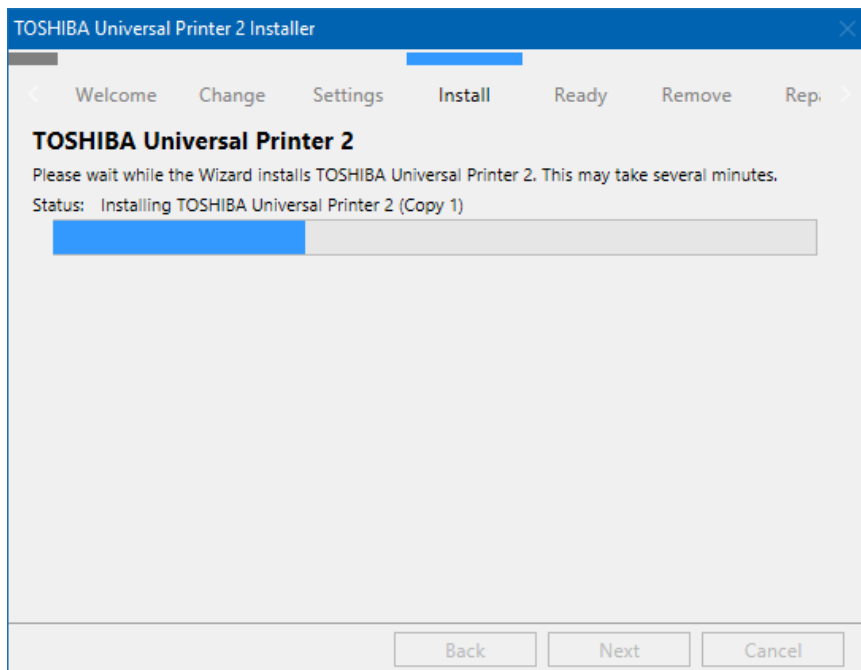
C. Select 'Add'.



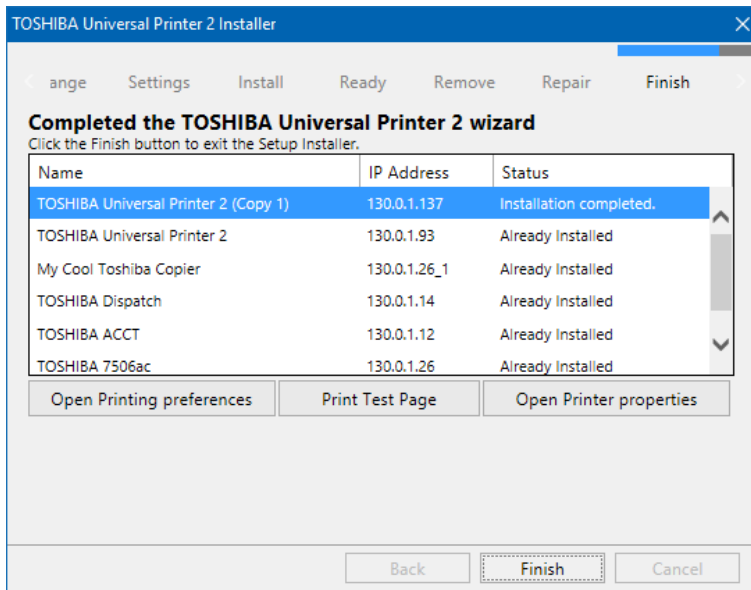
D. Select your Device.



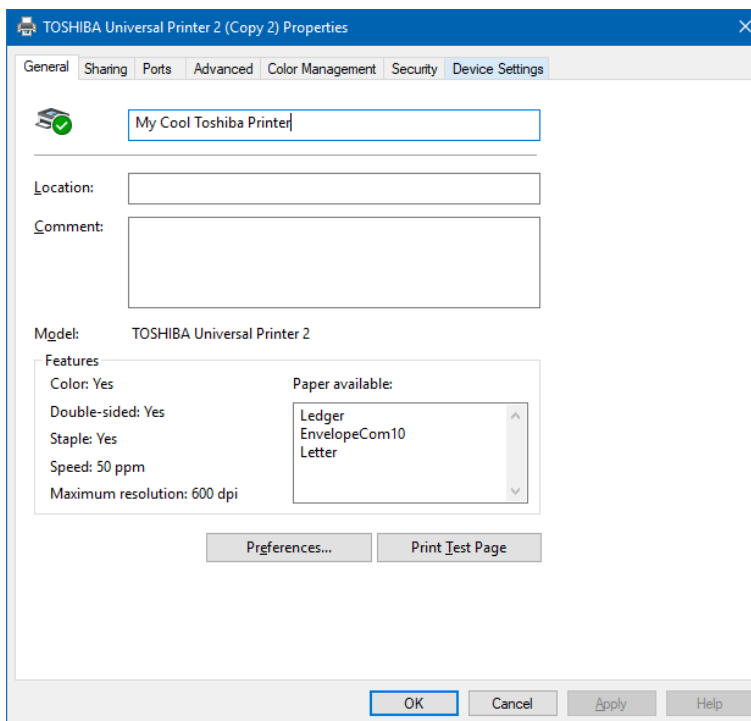
E. Select 'Install'.



F. Select 'Open Printer properties'.

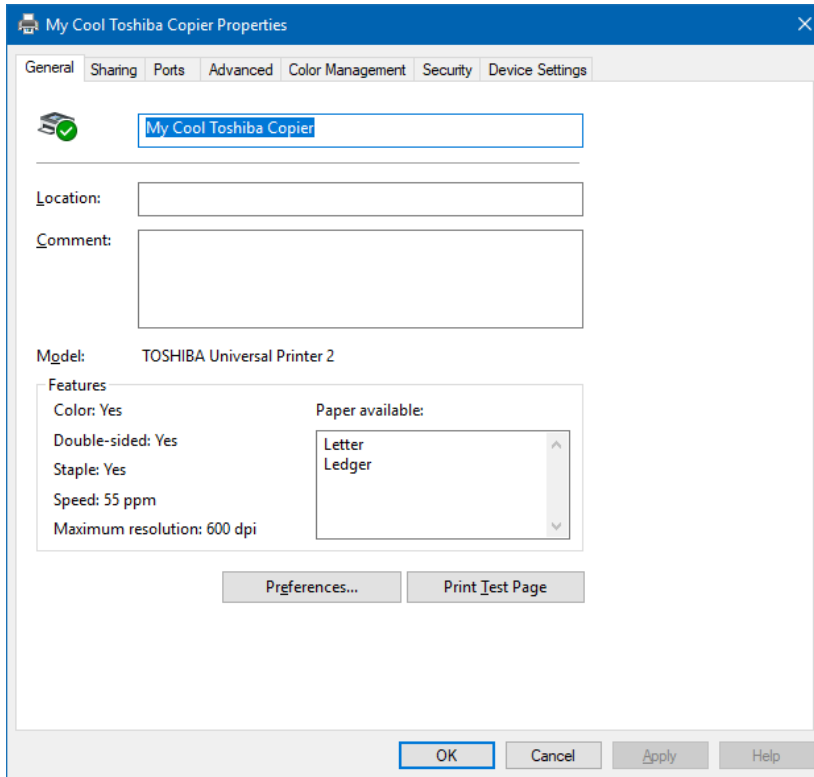


G. You can name your machine here.

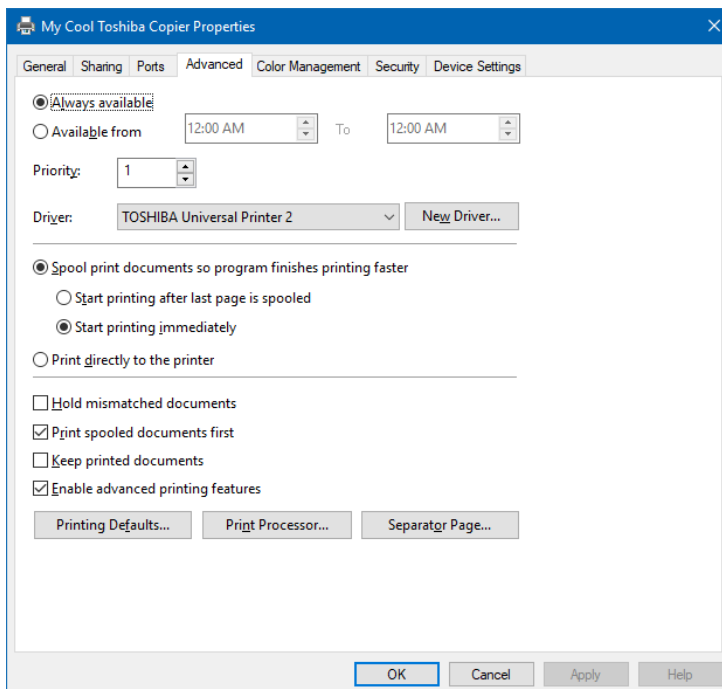


5. Select the 'Device Settings' Tab.

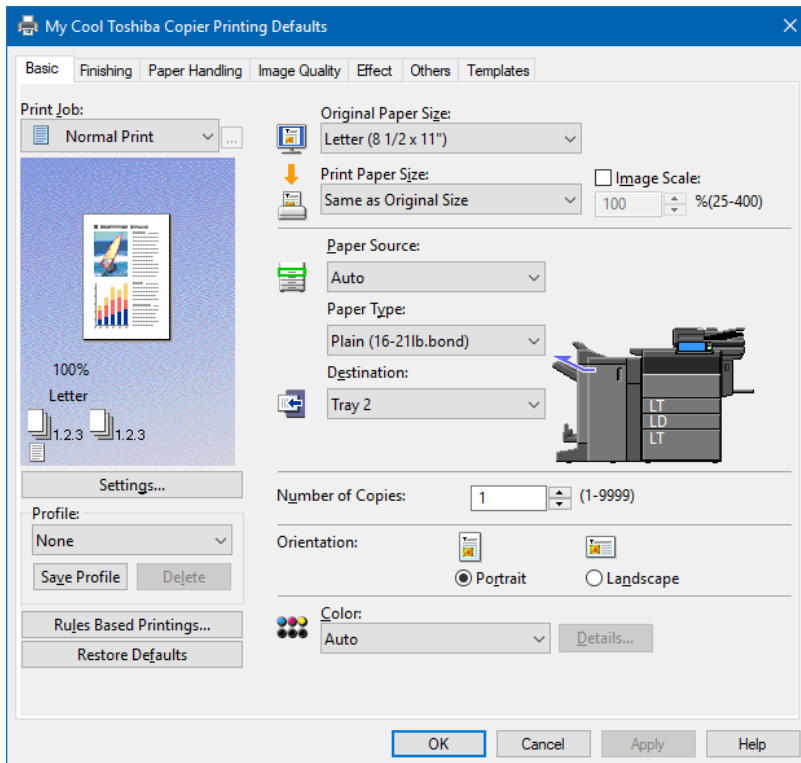
- A. By selecting the 'Device Settings' Tab, the driver pulls information from the copier to the driver for correct drawer configuration.



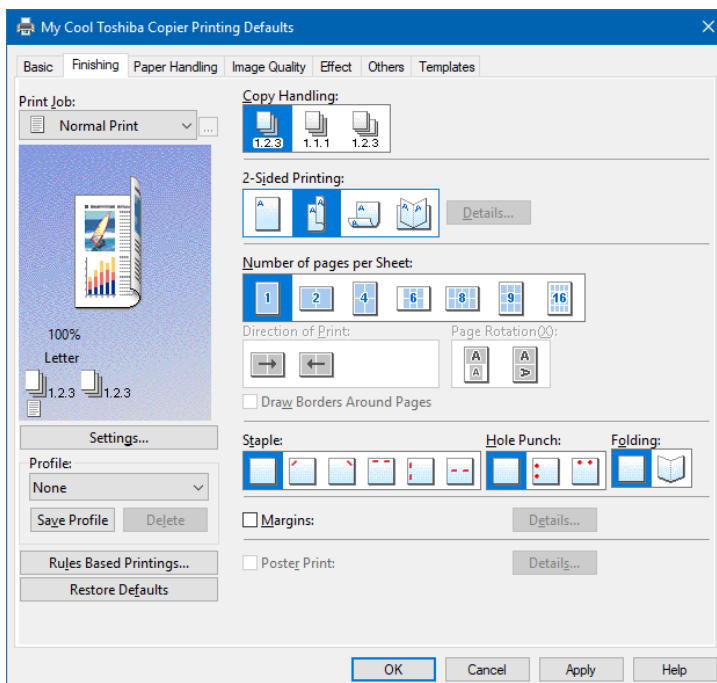
- B. Now go to the 'Advanced' Tab.



C. Select 'Printing Defaults...'



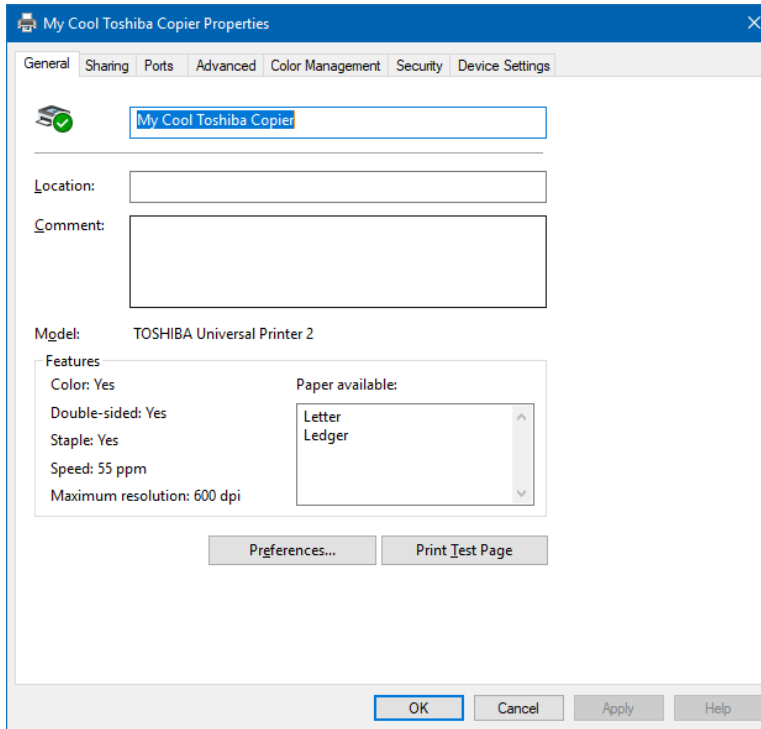
D. This is where you can set B/W or color as a default, plus on the 'Finishing' Tab, you can select 2-Sided printing or not.



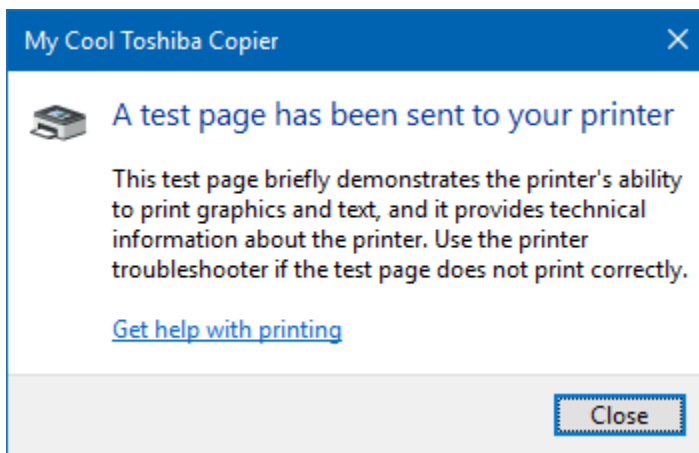
E. Once your defaults are set, select 'Apply' then 'OK'.

6. *Print a test Page.*

A. Select the 'General' Tab on the 'Properties' window.



B. Select 'Print Test Page'



C. Select 'Close'. Select 'Finish'

Your printer is now installed.